



# New Jersey Water Supply Authority Watershed Protection Programs Fact Sheet #13

## Riparian Restoration Plan for Agricultural Lands in the Raritan Basin

### Purpose:

Since 1986, 32% of historical riparian areas within the Raritan Basin have been converted to urban and agricultural uses. The Raritan Watershed Agricultural Committee (RWAC) recognized riparian restoration as a much needed best management practice (BMP) and supports the installation of stream corridor best management practices on agricultural lands (<http://www.raritanbasin.org/RaritanAg/RiparianPosition.pdf>). In response, funding was sought to determine where BMPs would have the greatest benefit.

### Project Partners:

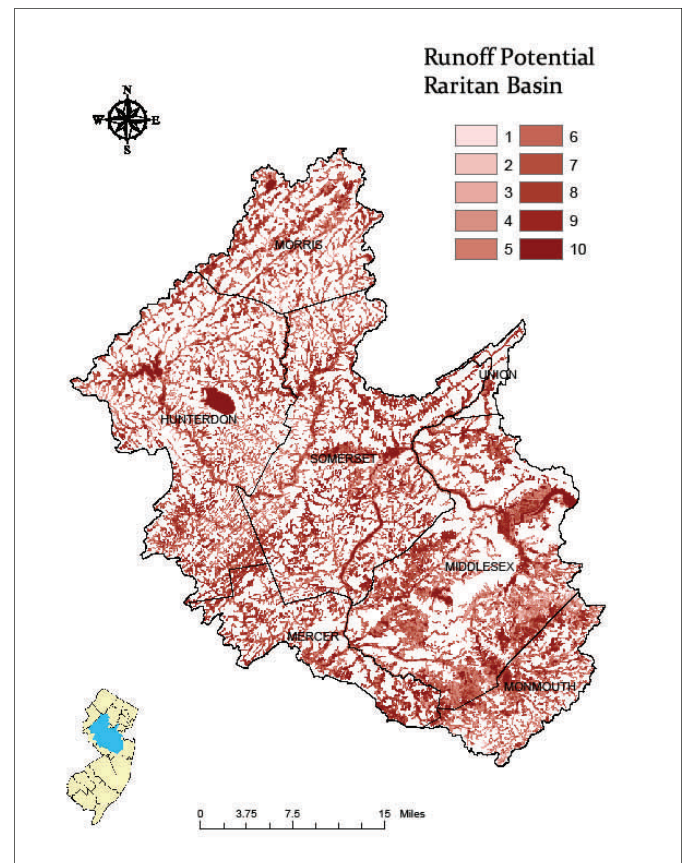
- North Jersey Resource Conservation & Development Council
- Natural Resources Conservation Service
- New Jersey Water Supply Authority
- New Jersey Institute of Technology
- Raritan Watershed Agricultural Committee

### Objectives:

1. Develop riparian restoration plan for agricultural lands in the Raritan Basin
2. Prioritization of agricultural lands for restoration projects
3. Identification and evaluation of available funding sources and institutional needs and methods for implementation of riparian projects

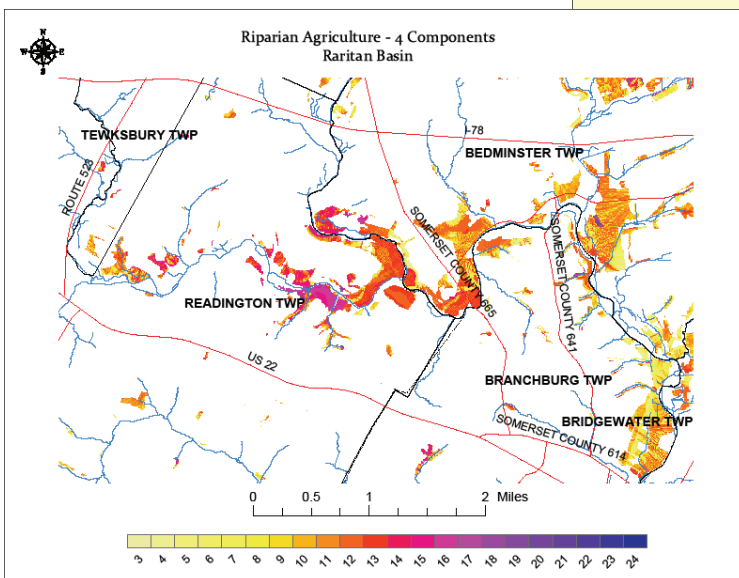
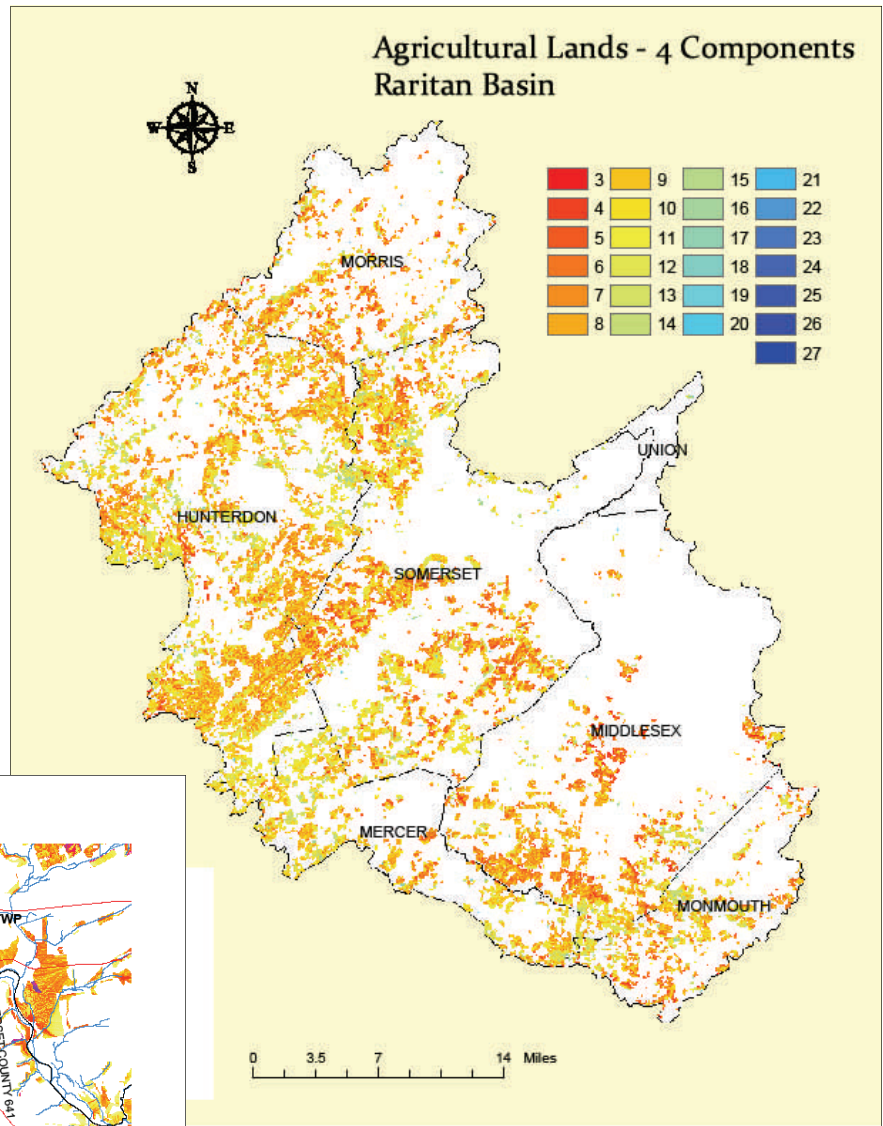
### Model Elements:

- Soil Erodibility: USDA-NRCS Soil Erodibility Index (EI)
- Hydrologic Sensitivity/Runoff Potential: Modified Topographic Index (TI) from USDA-NRCS
- Wildlife Habitat: NJDEP Non-game and Endangered Species Program's Landscape Project
- Impervious Surface: NJDEP LU/LC Data



## Results

- The four component scores were combined for a final prioritization score.
- These scores were divided approximately equal into 3 priorities, low, medium, and high.
- For all of the agricultural land in the Raritan Basin, the scores ranged from 3 – 27. For riparian agricultural areas, the scores ranged from 3 – 24.
- 9,003 acres of riparian agriculture are classified as high priority for buffer placement
- 32,958 acres of all agriculture are classified as high priority for BMPs



### For more information:

Kathy Hale  
NJ Water Supply Authority  
908-685-0315 ext. 228  
khale@raritanbasin.org

Jen House  
North Jersey RC&D  
908-735-0733 ext. 107  
jhouse@northjerseyrcd.org

### Next Steps

The model results are being used for two projects – *Addressing Agricultural Nonpoint Source Pollution in Priority Watersheds of the Raritan Basin* (NJDEP funding) and the *Raritan Basin Agricultural Water Enhancement Program (AWEP)* project (USDA-NRCS funding). The results of this project will be utilized to prioritize applications for conservation practice funding and to target outreach regarding these programs. In addition, using the data collected during this project, the project partners will make suggestions for improvements on current funding opportunities, and for new funding opportunities.