

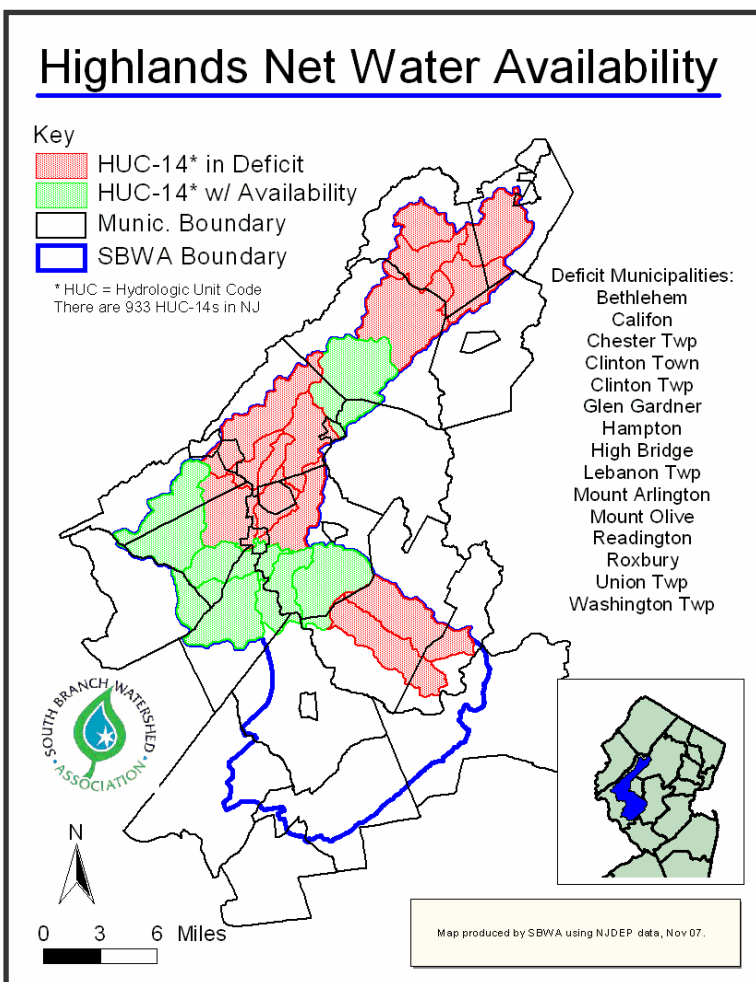
New Highlands Act Water Data Released

South Branch Watershed Specifics

At the Highlands Council meeting on November 1st a draft version of the “Calculation of Net Water Availability” was released. The document lists the subwatersheds* in the highlands that have no further room for growth **based solely on water availability**. The process used to obtain the net water availability was first to calculate the ground water availability for each subwatershed. This was compared to the estimates for combined consumptive / depletive uses and the estimates for domestic well and septic system use. Where existing uses were greater than ground water availability, the net water availability is a deficit.

The narrative explanation provided by the Highlands Council is posted on their website at: http://www.highlands.state.nj.us/njhighlands/about/calend/2007_meetings/8_summary_water_availability_tables_10_31_07.pdf

The watershed of the South Branch Raritan River has 19 subwatersheds in the legislated highlands area. Thirteen of those subwatersheds are in deficit. These subwatersheds are located in 15 municipalities: Bethlehem, Califon, Chester Twp, Clinton Town, Clinton Twp, Glen Gardner, Hampton, High Bridge, Lebanon Twp, Mount Arlington, Mount Olive, Readington, Union Twp and Washington Twp.



The map shows the deficit subwatersheds in red and their geographic location within the South Branch Watershed Association area.

*The subwatershed basis used is Hydrologic Unit Code 14 or HUC14. There are 933 HUC14s in the state and 183 HUC14s in the legislated highlands area.

For more information contact SBWA at 908-782-0422 or info@sbwa.org.